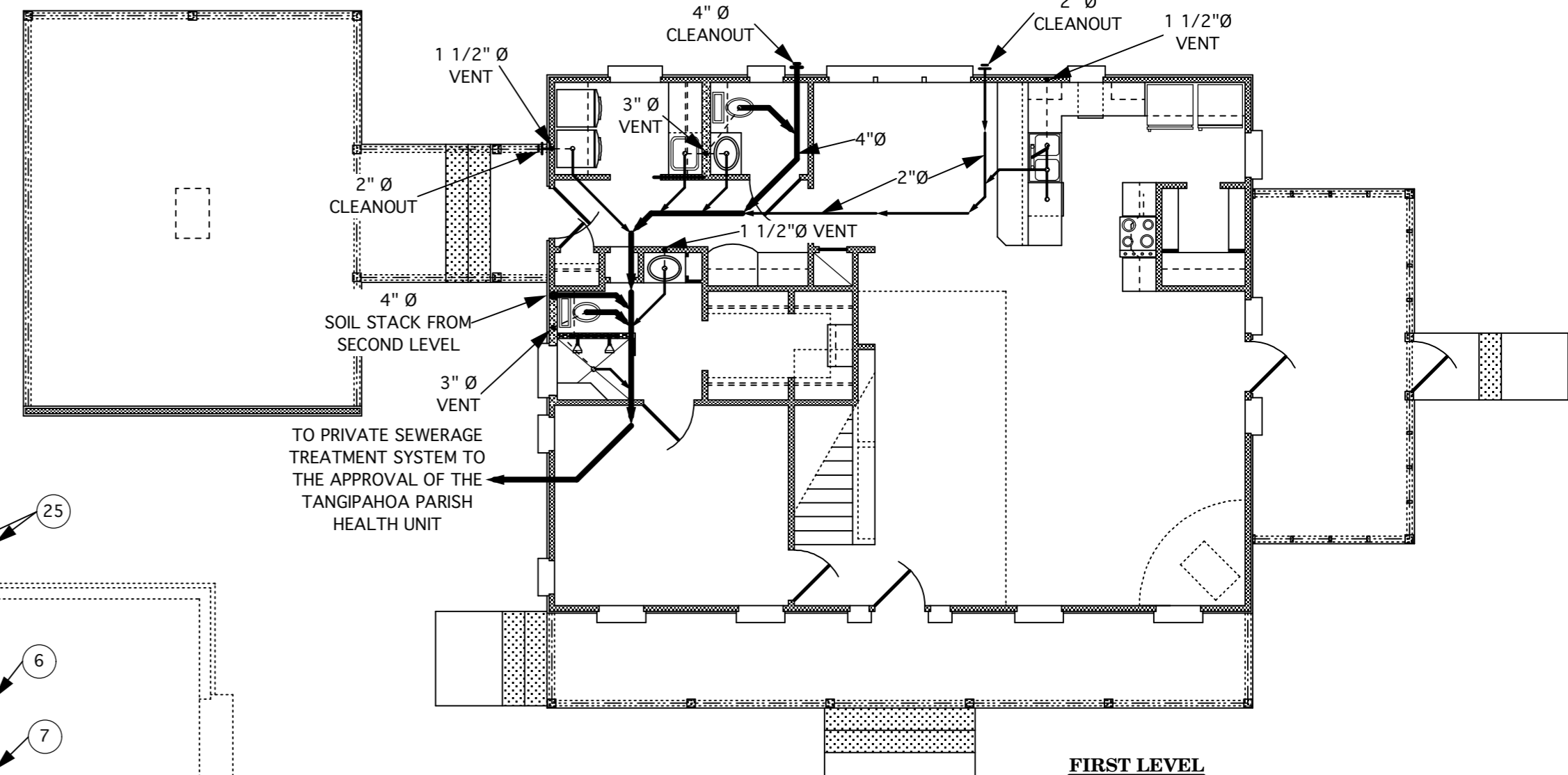
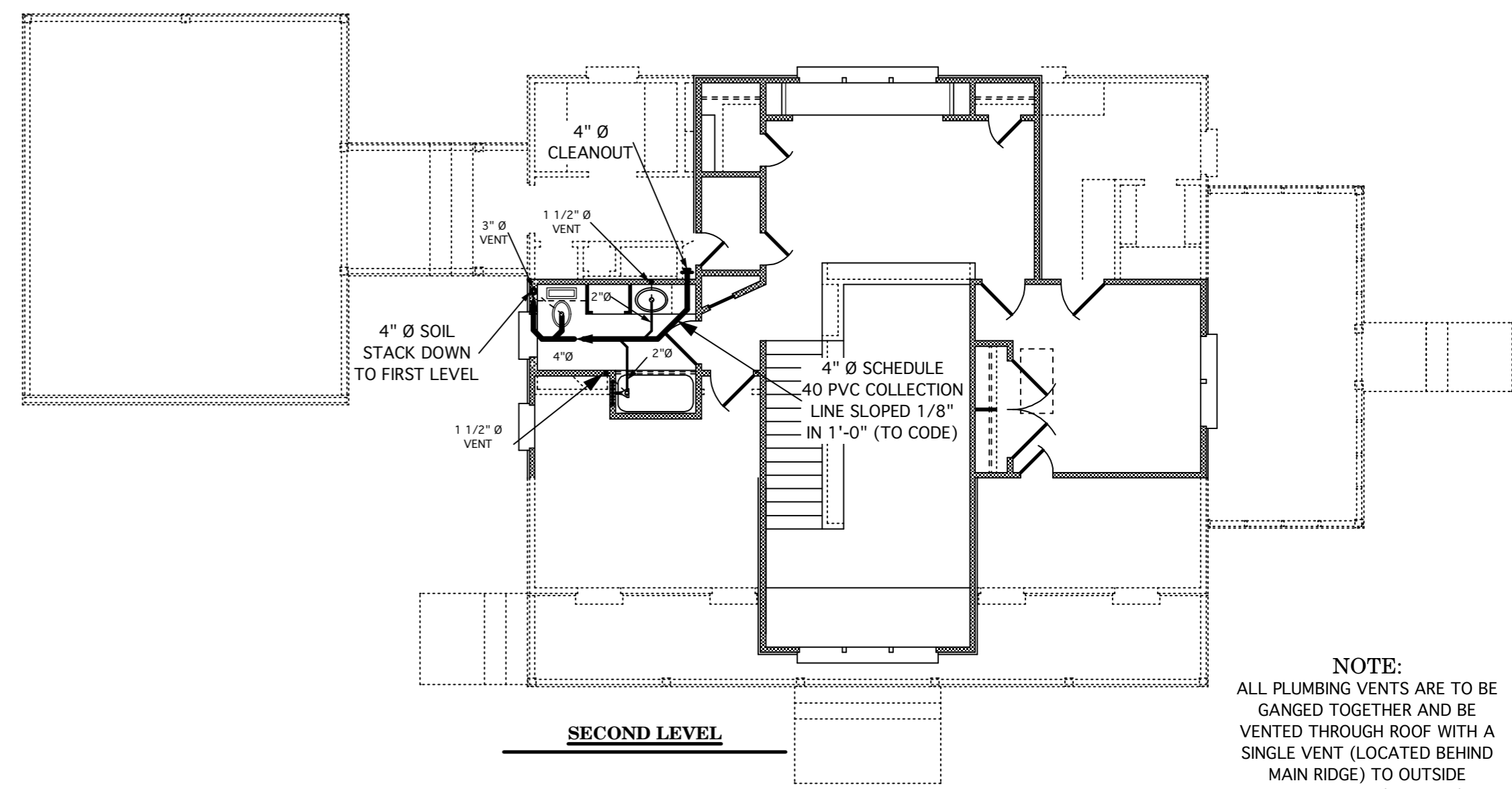
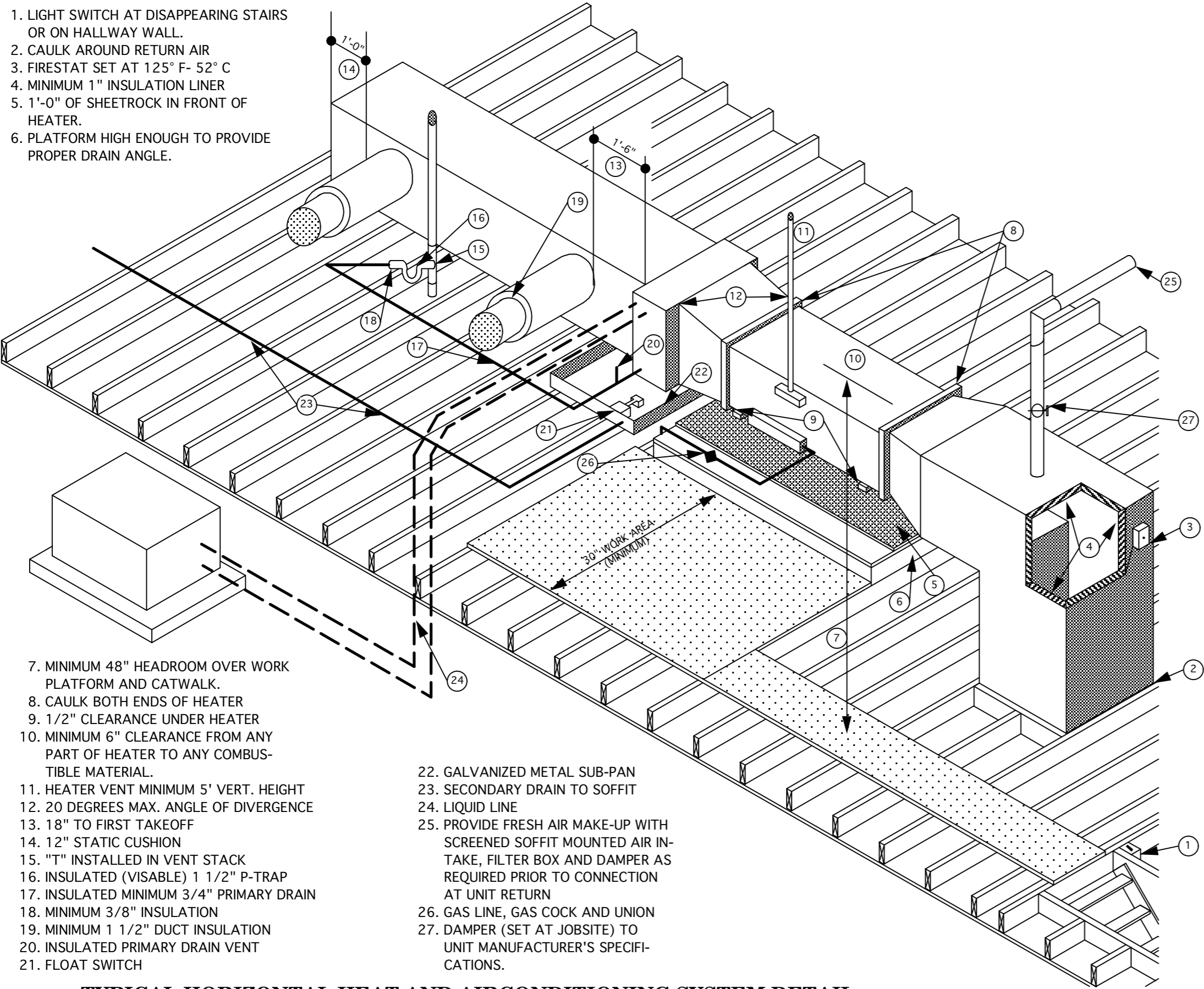


1. LIGHT SWITCH AT DISAPPEARING STAIRS OR ON HALLWAY WALL.
2. CAULK AROUND RETURN AIR
3. FIRESTAT SET AT 125° F- 52° C
4. MINIMUM 1" INSULATION LINER
5. 1'-0" OF SHEETROCK IN FRONT OF HEATER
6. PLATFORM HIGH ENOUGH TO PROVIDE PROPER DRAIN ANGLE.

7. MINIMUM 48" HEADROOM OVER WORK PLATFORM AND CATWALK.
8. CAULK BOTH ENDS OF HEATER
9. 1/2" CLEARANCE UNDER HEATER
10. MINIMUM 6" CLEARANCE FROM ANY PART OF HEATER TO ANY COMBUSTIBLE MATERIAL.
11. HEATER VENT MINIMUM 5' VERT. HEIGHT
12. 20 DEGREES MAX. ANGLE OF DIVERGENCE
13. 18" TO FIRST TAKEOFF
14. 12" STATIC CUSHION
15. "T" INSTALLED IN VENT STACK
16. INSULATED (VISIBLE) 1 1/2" P-TRAP
17. INSULATED MINIMUM 3/4" PRIMARY DRAIN
18. MINIMUM 3/8" INSULATION
19. MINIMUM 1 1/2" DUCT INSULATION
20. INSULATED PRIMARY DRAIN VENT
21. FLOAT SWITCH

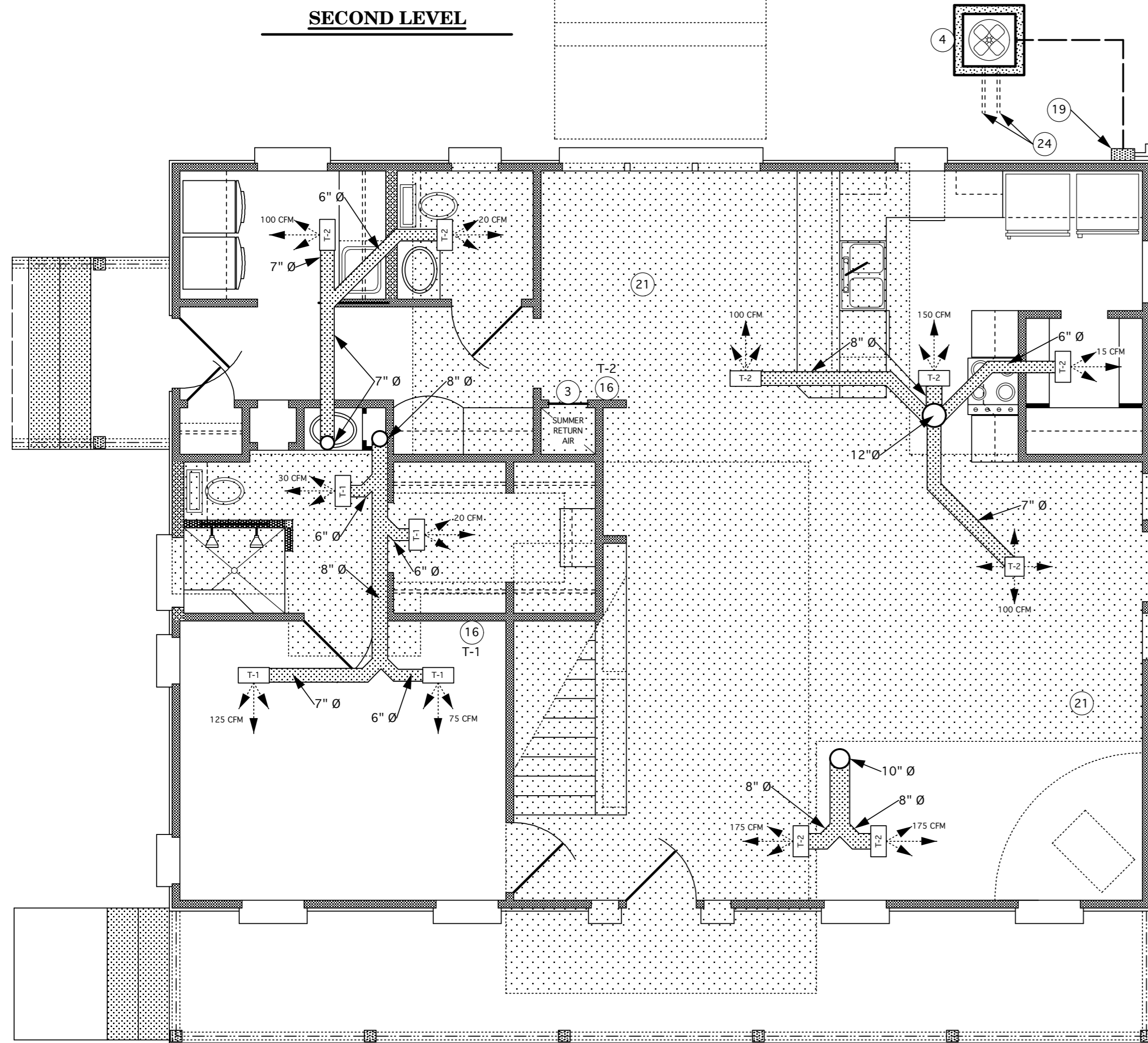
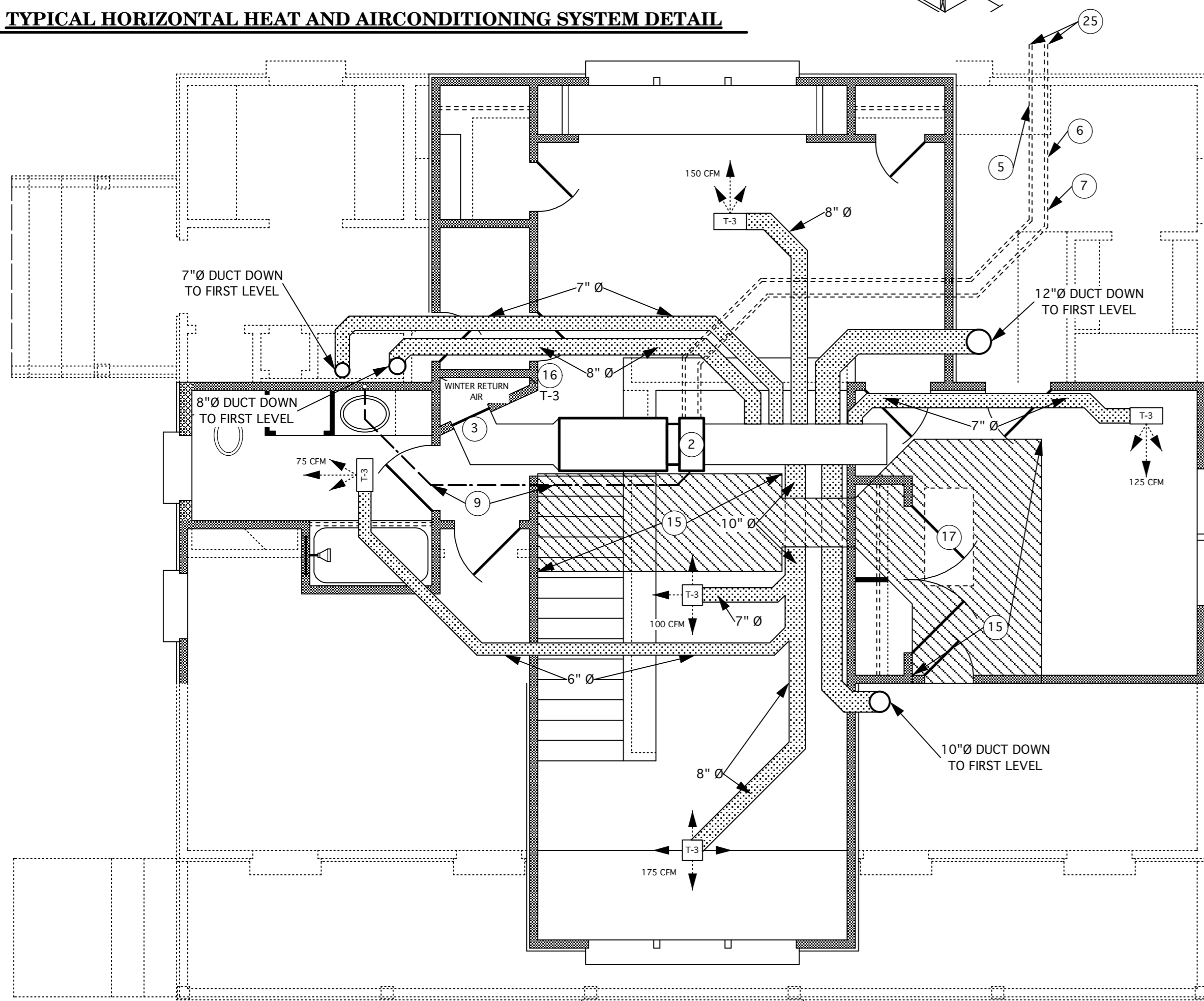
22. GALVANIZED METAL SUB-PAN
23. SECONDARY DRAIN TO SOFFIT
24. LIQUID LINE
25. PROVIDE FRESH AIR MAKE-UP WITH SCREENED SOFFIT MOUNTED AIR INTAKE, FILTER BOX AND DAMPER AS REQUIRED PRIOR TO CONNECTION AT UNIT RETURN
26. GAS LINE, GAS COCK AND UNION
27. DAMPER (SET AT JOBSITE) TO UNIT MANUFACTURER'S SPECIFICATIONS.

**TYPICAL HORIZONTAL HEAT AND AIRCONDITIONING SYSTEM DETAIL**



**PLUMBING PLANS SCALE: 1/8"=1'-0"**

**NOTE:**  
ALL PLUMBING VENTS ARE TO BE GANGED TOGETHER AND BE VENTED THROUGH ROOF WITH A SINGLE VENT (LOCATED BEHIND MAIN RIDGE) TO OUTSIDE ATMOSPHERE (TO CODE)



**HEAT and AIR CONDITIONING NOTES**

1. HORIZONTAL-BLOW ELECTRIC FURNACE HEATER UNIT 10 kW HEAT STRIP
2. A/C UNIT SIZE 3.5 TON-42,000 BTU. THIS UNIT IS TO BE EQUIPPED WITH VARIABLE SPEED FAN AND TWO SPEED CONDENSING UNIT TO HAVE SEER RATING OF 17.0 OR GREATER.
3. WALL MOUNTED R/A "A" (SUMMER RETURN) GRILL SIZE 20"x30" TO BE MOUNTED 8" ABOVE FIRST LEVEL FINISHED FLOOR. WALL MOUNTED R/A "B" (WINTER RETURN) GRILL SIZE 20"x30" TO BE MOUNTED 8" BELOW SECOND LEVEL FINISHED CEILING. PROVIDE DAMPERS AND STATIC BY-PASS DUCTS, AS REQUIRED, TO SEALED RETURN AIR CHAMBER FOR SYSTEM TO REMAIN IN BALANCE. SEE MANUFACTURER'S DETAILS AND SPECIFICATIONS.
4. CONDENSING UNIT ON CONCRETE PAD
5. RETURN LINE
6. SUCTION LINE
7. MINIMUM DIFFUSER SIZE 10" DIAMETER
8. ALL JOINTS IN DUCT (SUPPLY AND RETURN) TO BE SEALED WITH NON-TOXIC MASTIC REINFORCED WITH FIBER GLASS MESH TAPE.
9. DRAIN LINE TO 1 1/2" P-TRAP
10. MINIMUM DUCT SIZE 6" DIAMETER
11. ALL DUCTS TO BE GALVANIZED RIGID METAL DUCTS. DUCTS IN ATTIC TO BE INSULATED WITH 2" FIBER GLASS DUCTWRAP AND TOPPED WITH BLOWN FIBER GLASS INSULATION TO R-40. ALL DUCTS ARE TO BE EQUIPPED WITH DAMPERS AS REQUIRED FOR PROPER BALANCING OF AIR VOLUME AT EACH REGISTER
12. ALL RETURN DUCTS TO BE SEALED RIGID GALVANIZED DUCT
13. THIS UNIT IS TO BE EQUIPPED WITH AN ADDITIONAL U. V. LIGHT IN SEALED RETURN AIR CHAMBER AND 10 MICRON AIR FILTER WITH REPLACEABLE FILTER.
14. REFRIGERANT LINES TO HVAC UNIT LOCATED IN SECOND LEVEL ATTIC
15. REFRIGERANT LINES TO CONDENSING UNIT FROM HVAC UNIT LOCATED IN SECOND LEVEL ATTIC
16. LOCATION OF WALL MOUNTED ELECTRONIC PROGRAMMABLE THERMOSTAT (THREE [3] REQUIRED)
17. DISAPPEARING STAIR UNIT (SEE PLANS)
18. FRESH AIR MAKEUP
19. WALL MOUNTED UNIT DISCONNECT
20. ALL REGISTERS ARE TO BE CHECKED FOR AIR VOLUME DELIVERED PRIOR TO ENERGY RATER INSPECTION
21. LIGHTLY SHADED AREA INDICATES LOCATION OF SECOND LEVEL.
22. ALL RETURN DUCTS TO BE SEALED RIGID GALVANIZED DUCT
23. THIS UNIT IS TO BE EQUIPPED WITH AN ADDITIONAL U. V. LIGHT IN SEALED RETURN AIR CHAMBER AND 10 MICRON AIR FILTER WITH REPLACEABLE FILTER.
24. REFRIGERANT LINES TO HVAC UNIT LOCATED IN SECOND LEVEL ATTIC
25. REFRIGERANT LINES TO CONDENSING UNIT FROM HVAC UNIT LOCATED IN SECOND LEVEL ATTIC

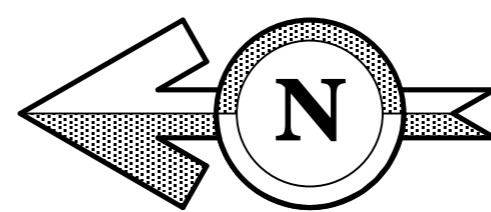
**WALL LEGEND**

- 2" SUPPORT PARTITION OR CABINET PANEL
- 2"x4" STUD WALL WITH STUDS 16" O. C. AND SOLID BLOCKING AT MID-HEIGHT OF ALL WALLS
- 2"x6" STUD WALL WITH STUDS 16" O. C. AND SOLID BLOCKING AT MID-HEIGHT OF ALL WALLS
- 84" TALL, 2"x4" STUD WALL WITH STUDS 16" O. C. AND SOLID BLOCKING AT MID-HEIGHT OF WALL

**FIRST LEVEL**

**HEAT AND AIR CONDITIONING PLAN SCALE: 1/4"=1'-0"**

**ORIENTATION**



E-MAIL: GUILLORY@COX.NET  
WWW.YOURNEWHOMEDSIGN.COM

**CUSTOM HOME DESIGNS**  
A LIMITED LIABILITY COMPANY  
JOHN G. GUILLORY, owner